

TOUCH TO START



TOUCH TO START



Our classic formula based on 50 years of advanced breastmilk research

Key features:

- Supports the immune system with immunonutrients (Vitamin C&D) naturally found in breastmilk^{1,2,3}
- Nutritionally complete formula*

Key ingredients:

- Prebiotic Oligosaccharides scGOS/lcFOS (9:1)
- Postbiotics produced by Lactofidus™ process**
- Vitamin C & D



For Healthcare Professionals use only. **Important notice:** Breastfeeding is the best for babies and a healthy diet / maternal nutrition is important when breastfeeding. A decision not to breastfeed can be difficult to reverse. Infant formula is suitable from birth when babies are not breastfed. **Follow-on formula is suitable for infant over the age of six months, as a liquid part of a diversified diet.** It is recommended that all formula milks be used on the advice of a doctor, midwife, health visitor, public health nurse, dietitian, pharmacist, or other professional responsible for maternal and child-care and the financial implications should be considered. All preparation and feeding instructions should be followed carefully as inappropriate preparation could lead to health hazards.

Our classic formula based on 50 years of advanced breastmilk research

Key features:

- Supports the immune system with immunonutrients (Vitamin C&D) naturally found in breastmilk^{1,2,3}
- Nutritionally complete formula*

Key ingredients:

- Prebiotic Oligosaccharides scGOS/lcFOS (9:1)

1. EFSA Journal. 2015;13(11):4298,9pp.
2. EFSA Journal. 2015;13(7):4182,9pp.
3. Wald ER, et al. J Pediatr . 1991;118(4, pt 1):509 514.

* As required by legislation for follow on formula

** Lactofidus is our unique fermentation with *S. thermophiles* 065 and *B breve* C50, thermally-treated after fermentation



thy diet / maternal nutrition is important when
rth when babies are not breastfed. **Follow-on**

formula is suitable for infant over the age of six months, as a liquid part of a diversified diet. It is recommended that all formula milks be used on the advice of a doctor, midwife, health visitor, public health nurse, dietitian, pharmacist, or other professional responsible for maternal and child-care and the financial implications should be considered. All preparation and feeding instructions should be followed carefully as inappropriate preparation could lead to health hazards.

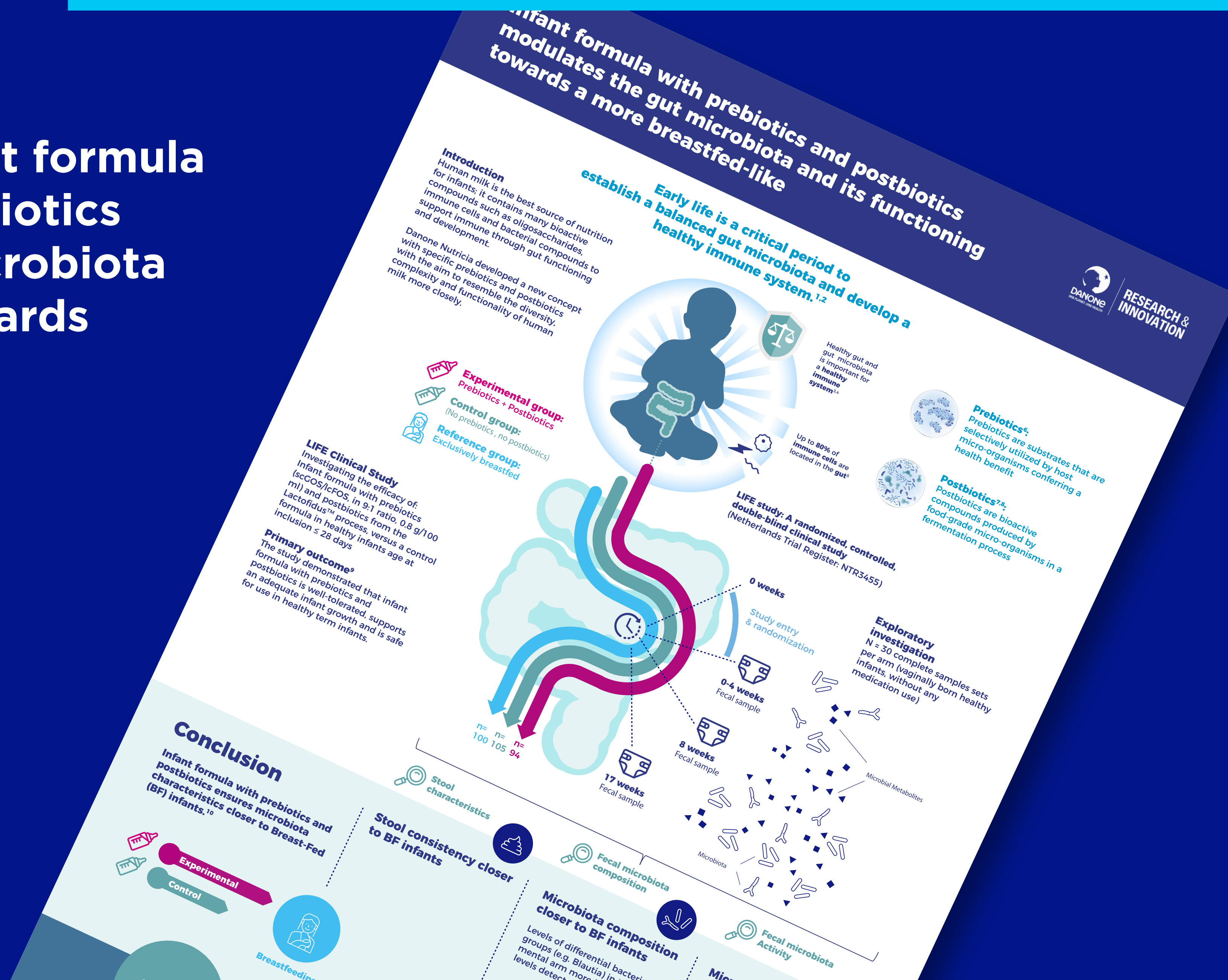




Learn more about infant formula with prebiotics & postbiotics modulating the gut microbiota and its functioning towards a more breastfed-like



Scan here to gain access today









Our formula for mixed feeding, suitable for combination with breastfeeding

Key features:

-  Better Gastrointestinal (GI) tolerance^{1-5****}
-  Reduces risk of infections^{6-11*,**,***}

Key ingredients:

-  * Prebiotic Oligosaccharides scGOS/lcFOS (9:1)
-  ** 2'-FL HMO
-  *** Postbiotics produced by Lactofidus™ process*****
-  **** Milk fat



For Healthcare Professionals use only. **Important notice:** Breastfeeding is the best for babies and a healthy diet / maternal nutrition is important when breastfeeding. A decision not to breastfeed can be difficult to reverse. Infant formula is suitable from birth when babies are not breastfed. **Follow-on formula is suitable for infant over the age of six months, as a liquid part of a diversified diet.** It is recommended that all formula milks be used on the advice of a doctor, midwife, health visitor, public health nurse, dietitian, pharmacist, or other professional responsible for maternal and child-care and the financial implications should be considered. All preparation and feeding instructions should be followed carefully as inappropriate preparation could lead to health hazards.



Our formula for mixed feeding, suitable for combination with breastfeeding

Key features:

-  Better Gastrointestinal (GI) tolerance^{1-5****}
-  Reduces risk of infections^{6-11*,**,***}

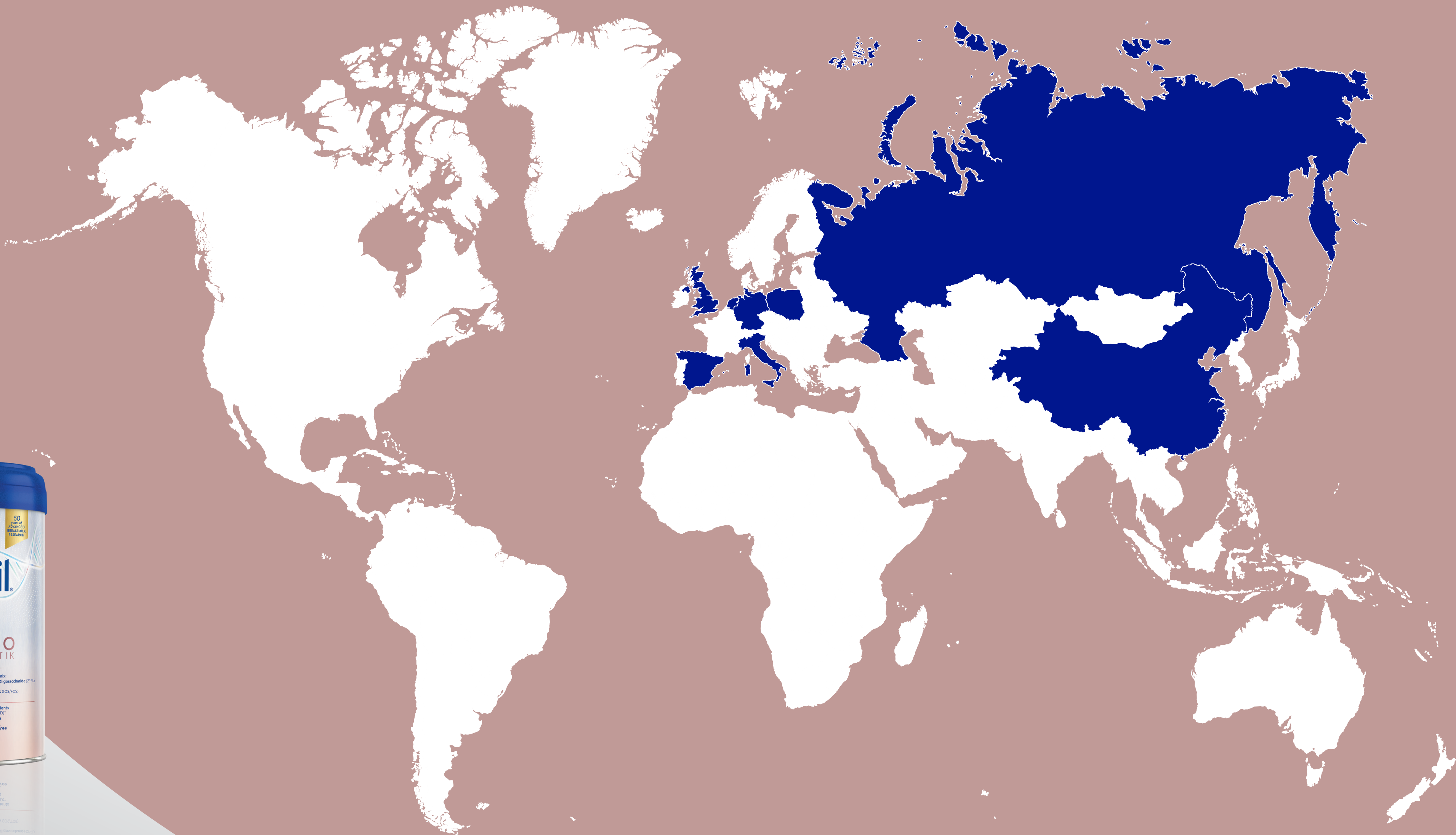
Key



1. Rodriguez-Herrera A et al. Nutrients, 2019,11(7):1530.
 2. Miles AM & Calder PC. Nutr Res, 2017;44:1-8.
 3. Bronsky J et al. J Pediatr Gastroenterol Nutr, 2019,68:742-60.
 4. Dolplanque B et al. J Pediatr Gastroenterol Nutr, 2015;61:8-17.
 5. Kennedy K et al. Am J Clin Nutr, 1999, 70:920-7.
 6. Reverri EJ et al. Nutrients, 2018;10, 1346.
 7. Bruzzese E et al. Clinical Nutrition, 2009;28:156-161.
 8. Arslanoglu S et al. J Nutr, 2008;138:1091-5.
 9. Arslanoglu S et al. Journal of Nutrition, 2007;137:2420-4.
 10. Chatchatee P et al. J Pediatr Gastroenterol Nutr, 2014 Apr;58(4):428-437.
 11. Thibault H et al. J Pediatr Gastroenterol Nutr, 2004;39(2):147-52.
- **** Lactofidus is our unique fermentation with *S. thermophiles* 065 and *B breve* C50, thermally-treated after fermentation



thy diet / maternal nutrition is important when
rth when babies are not breastfed. Follow-on
mmended that all formula milks be used on the
to health hazards.





**Learn more about a combination
of oligosaccharides designed
to closely mimic human milk
oligosaccharides (HMOS)
in breastmilk**



Scan here to gain
access today

